

FREEHOLD



House - Semi-Detached (EPC Rating: D)

18 THE GREEN, STOTFOLD, HITCHIN, HERTS, SG5 4AN

Price Guide

£475,000

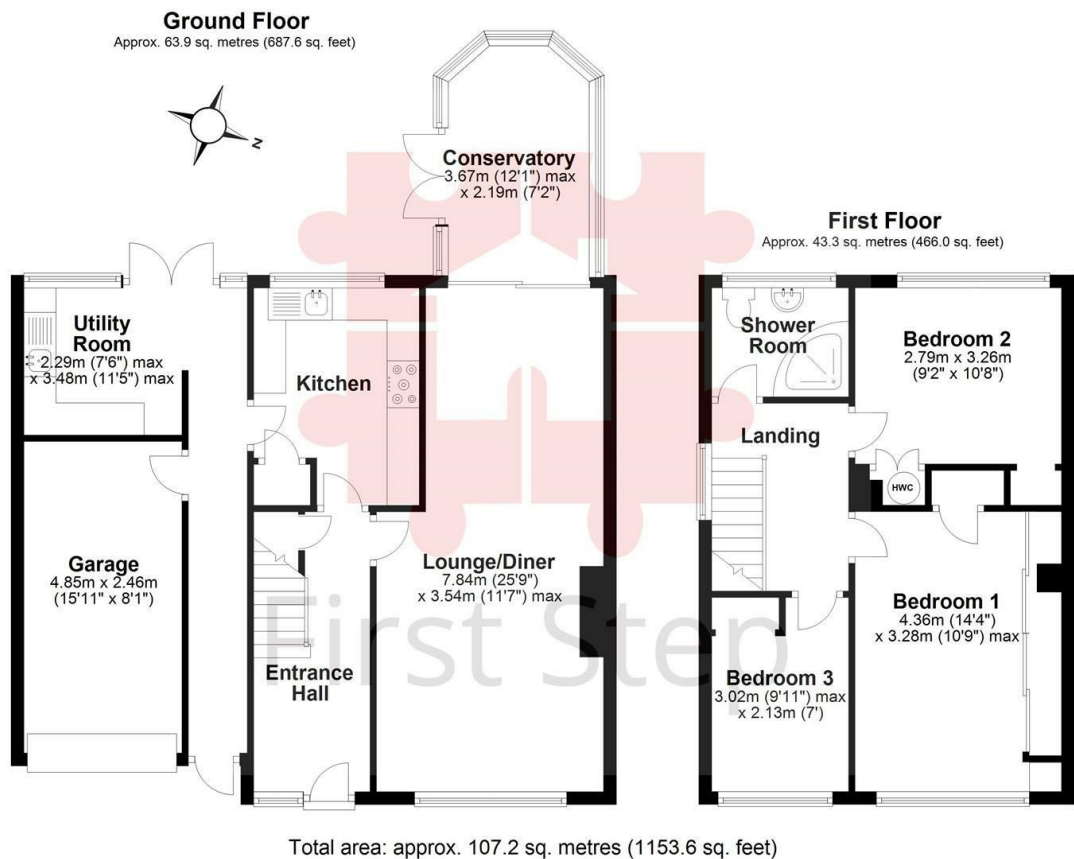


First Step



3 Bedroom House - Semi-Detached located in Stotfold

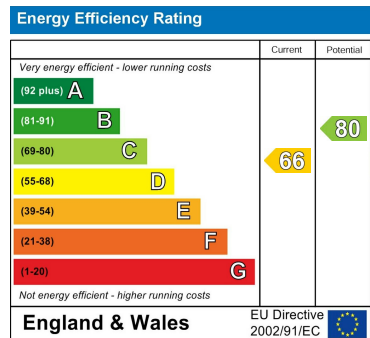
STUNNING established WEST Facing Garden (circa 100ft long)... WORKING FIRE... Kitchen with UTILITY ROOM... ALL YEAR ROUND CONSERVATORY... Excellent Storage... GARAGE Plus DRIVEWAY PARKING for 4 CARS...



Council Tax Band

D

Energy Performance Graph



Call us on

01462 659 730

sales@firststep.ltd

www.firststep.ltd

Agents Note: Whilst every care has been taken to prepare these particulars, they are for guidance purposes only. All measurements are approximate and are for general guidance purposes only and whilst every care has been taken to ensure their accuracy, they should not be relied upon and potential buyers are advised to recheck the measurements.